

BEVERAGE LINE CONDUIT SYSTEMS

SPECIFICATION

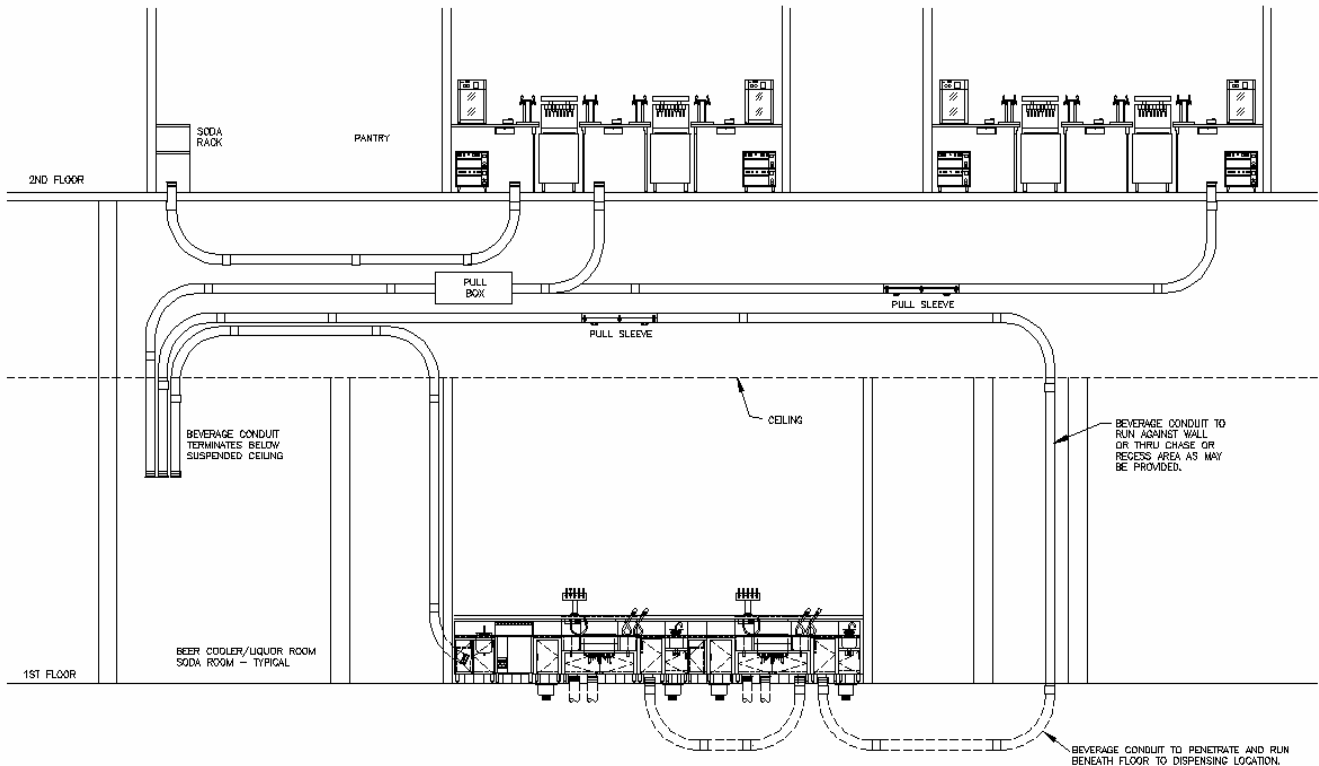
- A. The Beverage Line Conduit Systems to be installed hereunder shall be 4", 6", 8" and 10" as specified on the Food Service drawings, corrosion resistant aluminum conduit tubing, conforming to ASTM-B313 and ANSI-H26, and H35.1, as manufactured by Kelly BevWay® Systems Co., Chicago, IL, 877-753-0600.
- B. Bends shall be long sweep type, of the same grade and coated in the same manner as the tubing specified above. Minimum centerline radius of all bends shall be 24" for 4" O.D., 30" for 6" O.D., 32" for 8"O.D. and 32" for 10" O.D. No segmented elbows or short radius plumbing elbows shall be permitted.
- C. All joints shall be made with a liquidtite mechanical bolted coupling system or liquidtite slip coupling system. Edges of tubing and bends must be deburred and smoothed prior to forming joints. Expansion sleeves with a moisture barrier must be provided where the conduit crosses building expansion joints, liquidtite integrity maintained.
- D. No spiral formed tubing or duct, or other unsmooth interior tubing or conduit will be permitted. PVC shall be used only for underground and other buried portions of the systems, Schedule 40 type with Long Radius Bends, 24" for 4" PVC, 30" for 6" PVC and 48" for 8" PVC.
- E. Multi-Clamped Pull Sleeves, four (4) feet long minimum, must be provided for continued access to beverage lines in accessible locations approximately every 100 feet or every three (3) bends, whichever occurs first. Where junctions are required, Pull Boxes having adequate inside dimensions for pulling and turning will be provided in place of a Pull Sleeve.
- F. Conduit system terminations shall be stubbed-up 4" above finished floor unless otherwise called out on drawings. All floor penetrations shall be sealed with a UL approved firestop assembly method.
- G. All terminations shall be finished with a rounded slip fitting end-mouth having a smooth bell-shaped swaged outer edge.
- H. Support hangers will be double rod type and spaced on 10 foot centers. Support hangers will be provided within 1 foot of each Pull Box.
- I. Beverage Line Conduit System manufacturer shall have qualified experience on a minimum of ten (10) similar Projects.

BevWay Systems

Sizes and Specifications

Beer, Soda, Liquor, Beverage, CO2 Conduit Systems

Model	BevWay® Conduit Beverage Containment Distribution Systems
Sizes	2", 4", 6", 8", 10" +
Materials	Aluminum - Overhead Applications / PVC - Buried Applications. Galvanized and Stainless Steel Available where Conditions Require.
Conduit Lengths	10' & 20' Lengths Standard (Bell End)
Bend Radius - Aluminum	2" - 24", 4" - 24", 6" - 24" & 30", 8" - 32", 10" - 32"
Bend Radius - PVC	4" - 24", 6" - 30", 8" - 48"
Couplings	4 Bolt Compression
Pull Sleeves	4' Long Galvanized Steel - Powder Coat Finish. Recommended Every 100' or Every 3 Bends, Whichever Occurs First. No Hangers Required for Installation.
Pull Boxes	Sized As Required. Galvanized Steel or Powder Coat Finish - Full Panel Access. Required For Beverage Line Junctions and Multiple Changes In Direction.
End Fitting	Galvanized Steel - Flared End
Hangers	Double Rod Clamp Assembly
Optional Fittings & Equipment	Expansion Joints, Riser Stands, Nipple Plates, Seismic Braces, Firestop Assemblies, Multi-Line Hangers, End Plugs, Beverage Trays and Custom Equipment & Sizes.



 Kelly BevWay Systems Co.

PH. 877-753-0600

FX. 312-733-6971

© Bevway.2005

2425 W. Hubbard St., Chicago, IL, 60612
E-Mail Info@bevway.com . www.bevway.com